


Heavy Pattern 150# Stainless Fittings





Heavy Pattern 150# Stainless Fittings

Specifications

-  branded
- Stainless castings conform to ASTM A351 ACI Grade CF8 (304) & ACI Grade CF8M (316)
- NPT threads conform to ASME B1.20.1
- Manufacturing facility is ISO 9001:2008 Certified
- Fittings meet applicable chemical & mechanical properties



SCI ProPak™ System

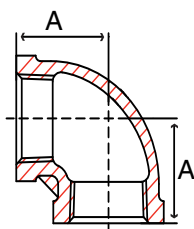
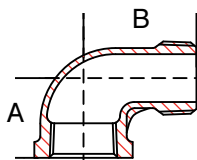


Fig. S3114E & S3116E - 90° Elbow

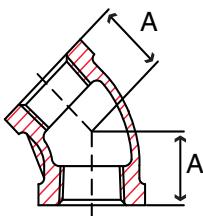
Size in	Part Number		A in	Packing		Weight lb
	304	316		Inner	Master	
1/8	S3114E 001	S3116E 001	0.71	120	480	0.05
1/4	S3114E 002	S3116E 002	0.77	100	400	0.08
3/8	S3114E 003	S3116E 003	0.94	50	200	0.12
1/2	S3114E 004	S3116E 004	1.16	30	120	0.19
3/4	S3114E 006	S3116E 006	1.26	18	72	0.30
1	S3114E 010	S3116E 010	1.44	10	40	0.52
1-1/4	S3114E 012	S3116E 012	1.73	4	16	0.71
1-1/2	S3114E 014	S3116E 014	1.91	3	12	1.07
2	S3114E 020	S3116E 020	2.24	2	8	1.45
2-1/2	S3114E 024	S3116E 024	2.70	-	6	3.26
3	S3114E 030	S3116E 030	3.09	-	3	4.66
4	S3114E 040	S3116E 040	3.82	-	2	7.05

Fig. S3114SE & S3116SE - 90° Street Elbow



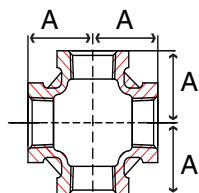
Size in	Part Number		A in	B in	Packing		Weight lb
	304	316			Inner	Master	
1/8	S3114SE001	S3116SE001	0.69	1.00	150	600	0.04
1/4	S3114SE002	S3116SE002	0.83	1.18	100	400	0.07
3/8	S3114SE003	S3116SE003	0.91	1.52	50	200	0.11
1/2	S3114SE004	S3116SE004	1.12	1.69	32	128	0.20
3/4	S3114SE006	S3116SE006	1.24	1.83	12	48	0.29
1	S3114SE010	S3116SE010	1.48	2.09	8	32	0.52
1-1/4	S3114SE012	S3116SE012	1.77	2.48	4	16	0.72
1-1/2	S3114SE014	S3116SE014	1.83	2.72	2	4	0.92
2	S3114SE020	S3116SE020	2.38	3.35	2	8	1.79
2-1/2	S3114SE024	S3116SE024	2.62	4.13	-	4	2.73
3	S3114SE030	S3116SE030	3.09	4.43	-	3	3.87
4	S3114SE040	S3116SE040	3.82	5.04	-	2	6.07

Fig. S3114F & S3116F - 45° Elbow



Size in	Part Number		A in	Packing		Weight lb
	304	316		Inner	Master	
1/8	S3114F 001	S3116F 001	0.73	120	480	0.07
1/4	S3114F 002	S3116F 002	0.75	100	400	0.07
3/8	S3114F 003	S3116F 003	0.75	60	240	0.11
1/2	S3114F 004	S3116F 004	0.87	30	120	0.22
3/4	S3114F 006	S3116F 006	0.91	20	80	0.34
1	S3114F 010	S3116F 010	1.10	8	32	0.53
1-1/4	S3114F 012	S3116F 012	1.26	6	24	0.66
1-1/2	S3114F 014	S3116F 014	1.38	3	12	0.93
2	S3114F 020	S3116F 020	1.65	2	8	1.34
2-1/2	S3114F 024	S3116F 024	1.85	-	6	2.87
3	S3114F 030	S3116F 030	2.05	-	4	3.93
4	S3114F 040	S3116F 040	2.60	-	2	5.91

Fig. S3114X & S3116X - Cross



Size in	Part Number		A in	Packing		Weight lb
	304	316		Inner	Master	
1/8	S3114X 001	S3116X 001	0.71	50	200	0.11
1/4	S3114X 002	S3116X 002	0.77	50	200	0.18
3/8	S3114X 003	S3116X 003	0.94	24	96	0.31
1/2	S3114X 004	S3116X 004	1.16	10	40	0.43
3/4	S3114X 006	S3116X 006	1.26	8	32	0.62
1	S3114X 010	S3116X 010	1.44	4	16	1.05
1-1/4	S3114X 012	S3116X 012	1.73	3	12	1.49
1-1/2	S3114X 014	S3116X 014	1.91	2	8	1.90
2	S3114X 020	S3116X 020	2.24	-	8	3.04
2-1/2	S3114X 024	S3116X 024	2.70	-	2	5.44
3	S3114X 030	S3116X 030	3.09	-	2	7.32
4	S3114X 040	S3116X 040	3.82	-	1	11.34

HVY PATTERN 150#

Fig. S3114T & S3116T - Tee

Size in	Part Number		A in	Packing		Weight lb
	304	316		Inner	Master	
1/8	S3114T 001	S3116T 001	0.71	75	300	0.09
1/4	S3114T 002	S3116T 002	0.77	70	280	0.11
3/8	S3114T 003	S3116T 003	0.94	40	160	0.18
1/2	S3114T 004	S3116T 004	1.16	15	60	0.29
3/4	S3114T 006	S3116T 006	1.26	12	48	0.46
1	S3114T 010	S3116T 010	1.44	6	24	0.68
1-1/4	S3114T 012	S3116T 012	1.73	-	20	1.06
1-1/2	S3114T 014	S3116T 014	1.91	-	12	1.39
2	S3114T 020	S3116T 020	2.24	-	9	1.97
2-1/2	S3114T 024	S3116T 024	2.70	-	5	4.54
3	S3114T 030	S3116T 030	3.09	-	2	6.26
4	S3114T 040	S3116T 040	3.82	-	1	9.43

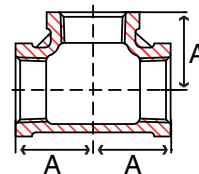
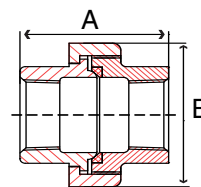


Fig. S3114U & S3116U - Union

Size in	Part Number		A in	B in	Packing		Weight lb
	304	316			Inner	Master	
1/8	S3114U 001	S3116U 001	1.44	1.14	45	180	0.22
1/4	S3114U 002	S3116U 002	1.44	1.14	45	180	0.19
3/8	S3114U 003	S3116U 003	1.48	1.42	24	96	0.30
1/2	S3114U 004	S3116U 004	1.63	1.61	16	64	0.37
3/4	S3114U 006	S3116U 006	1.85	1.93	12	48	0.53
1	S3114U 010	S3116U 010	1.97	2.28	8	32	0.85
1-1/4	S3114U 012	S3116U 012	2.05	2.68	4	16	1.13
1-1/2	S3114U 014	S3116U 014	2.28	3.03	2	8	1.56
2	S3114U 020	S3116U 020	2.48	3.62	2	8	2.37
2-1/2	S3114U 024	S3116U 024	2.89	4.29	-	8	3.81
3	S3114U 030	S3116U 030	3.54	4.92	-	4	5.34
4	S3114U 040	S3116U 040	3.94	6.18	-	2	8.60



HVY PATTERN 150#

Fig. S3114SP & S3116SP - Square Head Plug

Size in	Part Number		A in	B in	Packing		Weight lb
	304	316			Inner	Master	
1/8	S3114SP001	S3116SP001	0.71	0.28	600	2400	0.02
1/4	S3114SP002	S3116SP002	0.77	0.35	350	1400	0.03
3/8	S3114SP003	S3116SP003	0.79	0.38	250	1000	0.06
1/2	S3114SP004	S3116SP004	0.93	0.51	100	400	0.05
3/4	S3114SP006	S3116SP006	1.18	0.72	60	240	0.13
1	S3114SP010	S3116SP010	1.30	0.75	36	144	0.16
1-1/4	S3114SP012	S3116SP012	1.54	0.91	28	112	0.27
1-1/2	S3114SP014	S3116SP014	1.57	1.04	24	96	0.33
2	S3114SP020	S3116SP020	1.77	1.16	9	36	0.57
2-1/2	S3114SP024	S3116SP024	1.89	1.57	5	20	0.80
3	S3114SP030	S3116SP030	2.15	1.75	3	12	1.19
4	S3114SP040	S3116SP040	2.36	2.34	-	10	2.12

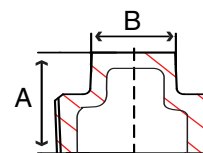


Fig. S3114HP & S3116HP - Hex Head Plug

Size in	Part Number		A in	B in	Packing		Weight lb
	304	316			Inner	Master	
1/8	S3114HP001	S3116HP001	0.71	0.55	400	1600	0.04
1/4	S3114HP002	S3116HP002	0.91	0.67	300	1200	0.05
3/8	S3114HP003	S3116HP003	0.94	0.83	120	480	0.06
1/2	S3114HP004	S3116HP004	1.06	1.02	100	400	0.10
3/4	S3114HP006	S3116HP006	1.10	1.26	60	240	0.16
1	S3114HP010	S3116HP010	1.34	1.50	35	140	0.24
1-1/4	S3114HP012	S3116HP012	1.40	1.81	18	72	0.34
1-1/2	S3114HP014	S3116HP014	1.44	2.05	15	60	0.48
2	S3114HP020	S3116HP020	1.46	2.56	6	24	0.72
2-1/2	S3114HP024	S3116HP024	1.91	3.17	4	16	1.35
3	S3114HP030	S3116HP030	1.99	3.76	-	12	1.92
4	S3114HP040	S3116HP040	2.03	4.76	-	10	2.70

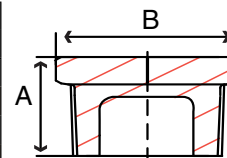
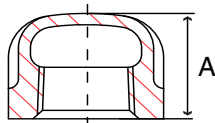
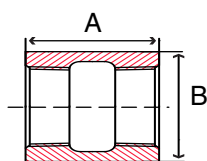


Fig. S3114C & S3116C - Cap



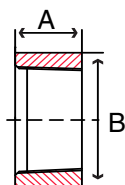
Size in	Part Number		A in	Packing		Weight lb
	304	316		Inner	Master	
1/8	S3114C 001	S3116C 001	0.61	300	1200	0.03
1/4	S3114C 002	S3116C 002	0.87	150	600	0.07
3/8	S3114C 003	S3116C 003	0.96	80	320	0.12
1/2	S3114C 004	S3116C 004	1.10	60	240	0.16
3/4	S3114C 006	S3116C 006	1.10	40	160	0.23
1	S3114C 010	S3116C 010	1.28	18	72	0.36
1-1/4	S3114C 012	S3116C 012	1.30	12	48	0.53
1-1/2	S3114C 014	S3116C 014	1.42	9	36	0.64
2	S3114C 020	S3116C 020	1.48	4	16	1.00
2-1/2	S3114C 024	S3116C 024	1.71	-	15	1.61
3	S3114C 030	S3116C 030	1.89	-	12	2.90
4	S3114C 040	S3116C 040	2.03	-	4	4.95

Fig. S3114CP & S3116CP - Full Coupling



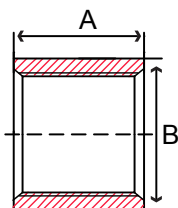
Size in	Part Number		A in	B in	Packing		Weight lb
	304	316			Inner	Master	
1/8	S3114CP001	S3116CP001	0.79	0.55	200	800	0.04
1/4	S3114CP002	S3116CP002	1.06	0.73	120	480	0.07
3/8	S3114CP003	S3116CP003	1.10	0.85	100	400	0.07
1/2	S3114CP004	S3116CP004	1.40	1.05	60	240	0.16
3/4	S3114CP006	S3116CP006	1.48	1.25	30	120	0.19
1	S3114CP010	S3116CP010	1.69	1.56	16	64	0.37
1-1/4	S3114CP012	S3116CP012	1.89	1.91	12	48	0.53
1-1/2	S3114CP014	S3116CP014	1.89	2.17	12	48	0.65
2	S3114CP020	S3116CP020	2.20	2.62	4	16	0.99
2-1/2	S3114CP024	S3116CP024	2.56	3.33	-	8	2.07
3	S3114CP030	S3116CP030	2.80	3.96	-	6	2.77
4	S3114CP040	S3116CP040	3.27	5.10	-	3	5.11
6	S3114CP060	S3116CP060	3.94	7.06	-	1	7.95

Fig. S3114HC & S3116HC - Half Coupling



Size in	Part Number		A in	B in	Packing		Weight lb
	304	316			Inner	Master	
1/8	S3114HC001	S3116HC001	0.43	0.55	400	1600	0.02
1/4	S3114HC002	S3116HC002	0.51	0.73	300	1200	0.03
3/8	S3114HC003	S3116HC003	0.55	0.85	200	800	0.03
1/2	S3114HC004	S3116HC004	0.71	1.05	100	400	0.09
3/4	S3114HC006	S3116HC006	0.77	1.25	60	240	0.09
1	S3114HC010	S3116HC010	0.83	1.56	35	140	0.18
1-1/4	S3114HC012	S3116HC012	0.94	1.91	24	96	0.24
1-1/2	S3114HC014	S3116HC014	0.94	2.17	20	80	0.31
2	S3114HC020	S3116HC020	1.10	2.62	8	32	0.44
2-1/2	S3114HC024	S3116HC024	1.30	3.33	4	16	1.01
3	S3114HC030	S3116HC030	1.42	3.96	-	12	1.37
4	S3114HC040	S3116HC040	1.65	5.10	-	6	2.56
6	S3114HC060	S3116HC060	1.97	7.06	-	1	3.95

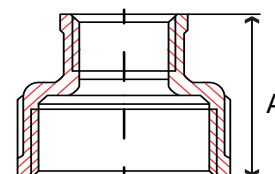
Fig. 29DC14 - 304 SS Recessed Drop Pipe Coupling



Size in	Part Number	A in	B in	Packing		Weight lb
				Inner	Master	
1	29DC14010	2.50	1.67	15	90	0.7
1-1/4	29DC14012	2.50	2.03	20	80	0.8
1-1/2	29DC14014	2.50	2.31	7	42	1.0
2	29DC14020	2.50	2.75	5	30	1.2

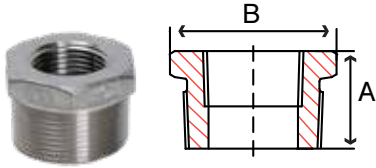
Fig. S3114RC & S3116RC - Reducing Coupling

Size in	Part Number		A in	Packing		Weight lb
	304	316		Inner	Master	
1/4 x 1/8	S3114RC002001	S3116RC002001	1.12	150	600	0.07
3/8 x 1/8	S3114RC003001	S3116RC003001	1.59	60	240	0.13
3/8 x 1/4	S3114RC003002	S3116RC003002	1.59	60	240	0.15
1/2 x 1/8	S3114RC004001	S3116RC004001	1.75	40	160	0.16
1/2 x 1/4	S3114RC004002	S3116RC004002	1.75	40	160	0.18
1/2 x 3/8	S3114RC004003	S3116RC004003	1.75	40	160	0.20
3/4 x 1/8	S3114RC006001	S3116RC006001	1.75	24	96	0.21
3/4 x 1/4	S3114RC006002	S3116RC006002	1.75	24	96	0.21
3/4 x 3/8	S3114RC006003	S3116RC006003	1.75	24	96	0.23
3/4 x 1/2	S3114RC006004	S3116RC006004	1.75	24	96	0.26
1 x 1/8	S3114RC010001	S3116RC010001	1.97	12	48	0.35
1 x 1/4	S3114RC010002	S3116RC010002	1.97	12	48	0.36
1 x 3/8	S3114RC010003	S3116RC010003	1.97	12	48	0.37
1 x 1/2	S3114RC010004	S3116RC010004	1.97	12	48	0.36
1 x 3/4	S3114RC010006	S3116RC010006	1.97	12	48	0.42
1-1/4 x 1/8	S3114RC012001	S3116RC012001	1.97	12	48	0.45
1-1/4 x 1/4	S3114RC012002	S3116RC012002	1.97	12	48	0.51
1-1/4 x 3/8	S3114RC012003	S3116RC012003	1.97	12	48	0.48
1-1/4 x 1/2	S3114RC012004	S3116RC012004	1.97	12	48	0.51
1-1/4 x 3/4	S3114RC012006	S3116RC012006	1.97	12	48	0.53
1-1/4 x 1	S3114RC012010	S3116RC012010	1.97	12	48	0.62
1-1/2 x 1/8	S3114RC014001	S3116RC014001	2.26	8	32	0.59
1-1/2 x 1/4	S3114RC014002	S3116RC014002	2.26	8	32	0.59
1-1/2 x 3/8	S3114RC014003	S3116RC014003	2.26	8	32	0.62
1-1/2 x 1/2	S3114RC014004	S3116RC014004	2.26	8	32	0.61
1-1/2 x 3/4	S3114RC014006	S3116RC014006	2.26	8	32	0.66
1-1/2 x 1	S3114RC014010	S3116RC014010	2.26	4	16	0.70
1-1/2 x 1-1/4	S3114RC014012	S3116RC014012	2.26	4	16	0.75
2 x 1/8	S3114RC020001	S3114RC020001	2.64	4	16	0.99
2 x 1/4	S3114RC020002	S3116RC020002	2.64	4	16	0.93
2 x 3/8	S3114RC020003	S3116RC020003	2.64	4	16	0.96
2 x 1/2	S3114RC020004	S3116RC020004	2.64	4	16	0.98
2 x 3/4	S3114RC020006	S3116RC020006	2.64	4	16	1.03
2 x 1	S3114RC020010	S3116RC020010	2.64	4	16	1.07
2 x 1-1/4	S3114RC020012	S3116RC020012	2.64	4	16	1.12
2 x 1-1/2	S3114RC020014	S3116RC020014	2.64	2	8	1.13
2-1/2 x 1/2	S3114RC024004	S3116RC024004	2.95	-	16	1.68
2-1/2 x 3/4	S3114RC024006	S3116RC024006	2.95	-	16	1.60
2-1/2 x 1	S3114RC024010	S3116RC024010	2.95	-	16	1.68
2-1/2 x 1-1/4	S3114RC024012	S3116RC024012	2.95	-	16	1.73
2-1/2 x 1-1/2	S3114RC024014	S3116RC024014	2.95	-	16	1.78
2-1/2 x 2	S3114RC024020	S3116RC024020	2.95	-	9	1.92
3 x 3/4	S3114RC030006	S3116RC030006	3.27	-	9	2.71
3 x 1	S3114RC030010	S3116RC030010	3.27	-	9	2.68
3 x 1-1/4	S3114RC030012	S3116RC030012	3.27	-	9	2.79
3 x 1-1/2	S3114RC030014	S3116RC030014	3.27	-	9	2.73
3 x 2	S3114RC030020	S3116RC030020	3.27	-	9	2.84
3 x 2-1/2	S3114RC030024	S3116RC030024	3.27	-	6	3.10
4 x 1	S3114RC040010	S3116RC040010	3.82	-	3	4.73
4 x 1-1/2	S3114RC040014	S3116RC040014	3.82	-	3	4.86
4 x 2	S3114RC040020	S3116RC040020	3.82	-	3	5.03
4 x 2-1/2	S3114RC040024	S3116RC040024	3.82	-	3	5.13
4 x 3	S3114RC040030	S3116RC040030	3.82	-	3	5.56



H V Y P A T T E R N 1 5 0 #

Fig. S3114HB & S3116HB - Hex Bushing



Size in	Part Number		A in	B in	Packing		Weight lb
	304	316			Inner	Master	
1/4 x 1/8	S3114HB002001	S3116HB002001	0.89	0.69	300	1200	0.04
3/8 x 1/8	S3114HB003001	S3116HB003001	0.91	0.87	120	480	0.07
3/8 x 1/4	S3114HB003002	S3116HB003002	0.91	0.87	120	480	0.05
1/2 x 1/8	S3114HB004001	S3116HB004001	0.99	1.00	100	400	0.09
1/2 x 1/4	S3114HB004002	S3116HB004002	0.99	1.00	100	400	0.09
1/2 x 3/8	S3114HB004003	S3116HB004003	0.99	1.00	100	400	0.05
3/4 x 1/8	S3114HB006001	S3116HB006001	1.02	1.24	60	240	0.16
3/4 x 1/4	S3114HB006002	S3116HB006002	1.02	1.24	60	240	0.15
3/4 x 3/8	S3114HB006003	S3116HB006003	1.02	1.24	60	240	0.15
3/4 x 1/2	S3114HB006004	S3116HB006004	1.02	1.24	60	240	0.13
1 x 1/8	S3114HB010001	S3116HB010001	1.30	1.52	36	144	0.26
1 x 1/4	S3114HB010002	S3116HB010002	1.30	1.52	36	144	0.25
1 x 3/8	S3114HB010003	S3116HB010003	1.30	1.52	36	144	0.24
1 x 1/2	S3114HB010004	S3116HB010004	1.30	1.52	36	144	0.22
1 x 3/4	S3114HB010006	S3116HB010006	1.30	1.52	36	144	0.17
1-1/4 x 1/8	S3114HB012001	S3116HB012001	1.30	1.81	18	72	0.35
1-1/4 x 1/4	S3114HB012002	S3116HB012002	1.30	1.81	18	72	0.36
1-1/4 x 3/8	S3114HB012003	S3116HB012003	1.30	1.81	18	72	0.35
1-1/4 x 1/2	S3114HB012004	S3116HB012004	1.30	1.81	18	72	0.35
1-1/4 x 3/4	S3114HB012006	S3116HB012006	1.30	1.81	18	72	0.28
1-1/4 x 1	S3114HB012010	S3116HB012010	1.30	1.81	18	72	0.26
1-1/2 x 1/4	S3114HB014002	S3116HB014002	1.38	2.03	18	72	0.52
1-1/2 x 3/8	S3114HB014003	S3116HB014003	1.38	2.03	18	72	0.52
1-1/2 x 1/2	S3114HB014004	S3116HB014004	1.38	2.03	18	72	0.51
1-1/2 x 3/4	S3114HB014006	S3116HB014006	1.38	2.03	18	72	0.49
1-1/2 x 1	S3114HB014010	S3116HB014010	1.38	2.03	18	72	0.45
1-1/2 x 1-1/4	S3114HB014012	S3116HB014012	1.38	2.03	18	72	0.34
2 x 1/4	S3114HB020002	S3116HB020002	1.42	2.46	9	36	0.77
2 x 3/8	S3114HB020003	S3116HB020003	1.42	2.46	9	36	0.80
2 x 1/2	S3114HB020004	S3116HB020004	1.42	2.46	9	36	0.77
2 x 3/4	S3114HB020006	S3116HB020006	1.42	2.46	9	36	0.75
2 x 1	S3114HB020010	S3116HB020010	1.42	2.46	9	36	0.77
2 x 1-1/4	S3114HB020012	S3116HB020012	1.93	3.15	9	36	0.70
2 x 1-1/2	S3114HB020014	S3116HB020014	1.93	3.15	9	36	0.57
2-1/2 x 1/2	S3114HB024004	S3116HB024004	1.93	3.15	4	16	1.26
2-1/2 x 3/4	S3114HB024006	S3116HB024006	1.93	3.15	4	16	1.32
2-1/2 x 1	S3114HB024010	S3116HB024010	1.93	3.15	4	16	1.40
2-1/2 x 1-1/4	S3114HB024012	S3116HB024012	1.93	3.15	4	16	1.40
2-1/2 x 1-1/2	S3114HB024014	S3116HB024014	1.93	3.15	4	16	1.23
2-1/2 x 2	S3114HB024020	S3116HB024020	1.93	3.15	4	16	0.99
3 x 1/2	S3114HB030004	S3116HB030004	1.95	3.76	3	12	2.12
3 x 3/4	S3114HB030006	S3116HB030006	1.95	3.76	3	12	2.08
3 x 1	S3114HB030010	S3116HB030010	1.95	3.76	3	12	2.17
3 x 1-1/4	S3114HB030012	S3116HB030012	1.95	3.76	3	12	2.20
3 x 1-1/2	S3114HB030014	S3116HB030014	1.95	3.76	3	12	2.10
3 x 2	S3114HB030020	S3116HB030020	1.95	3.76	3	12	1.90
3 x 2-1/2	S3114HB030024	S3116HB030024	1.95	3.76	3	12	1.61
4 x 1	S3114HB040010	S3116HB040010	2.01	4.74	-	8	3.64
4 x 1-1/4	S3114HB040012	S3116HB040012	2.01	4.74	-	8	3.50
4 x 1-1/2	S3114HB040014	S3116HB040014	2.01	4.74	-	8	3.61
4 x 2	S3114HB040020	S3116HB040020	2.01	4.74	-	8	3.52
4 x 2-1/2	S3114HB040024	S3116HB040024	2.01	4.74	-	8	3.40
4 x 3	S3114HB040030	S3116HB040030	2.01	4.74	-	8	2.83

All bushings are outside hex.

Fig. S3616WS - Weld Spud

Size in	Part Number 316	A in	B in	Packing		Weight lb
				Inner	Master	
1/4	S3616WS002	0.50	1.50	-	1	0.05
3/8	S3616WS003	0.50	1.62	-	1	0.06
1/2	S3616WS004	0.59	1.75	-	1	0.1
3/4	S3616WS006	0.65	1.93	-	1	0.2
1	S3616WS010	0.78	2.18	-	1	0.2
1-1/4	S3616WS012	0.75	2.68	-	1	0.3
1-1/2	S3616WS014	0.87	3.00	-	1	0.4
2	S3616WS020	0.93	3.50	-	1	0.6
2-1/2	S3616WS024	1.00	4.06	-	1	1.1
3	S3616WS030	1.00	4.62	-	1	1.3
4	S3616WS040	1.12	5.81	-	1	2.6

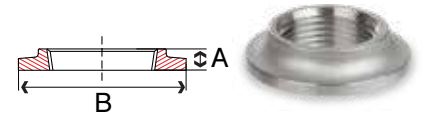
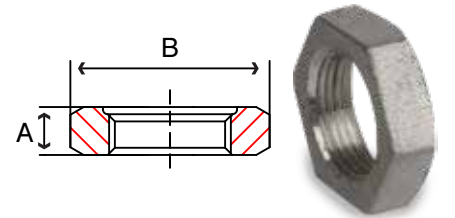


Fig. S3314LN & S3316LN - Lock Nut

Size in	Part Number		A in	B* in	Packing		Weight lb
	304	316			Inner	Master	
1/8	S3314LN001	S3316LN001	0.25	0.66	-	1	0.03
1/4	S3314LN002	S3316LN002	0.28	0.84	-	1	0.03
3/8	S3314LN003	S3316LN003	0.30	1.00	-	1	0.05
1/2	S3314LN004	S3316LN004	0.30	1.18	-	1	0.06
3/4	S3314LN006	S3316LN006	0.36	1.43	-	1	0.1
1	S3314LN010	S3316LN010	0.35	1.75	-	1	0.1
1-1/4	S3314LN012	S3316LN012	0.46	2.10	-	1	0.2
1-1/2	S3314LN014	S3316LN014	0.46	2.35	-	1	0.3
2	S3314LN020	S3316LN020	0.52	2.88	-	1	0.4
2-1/2	S3314LN024	S3316LN024	0.58	3.50	-	1	0.8
3	S3314LN030	S3316LN030	0.67	4.27	-	1	1.3
4	S3314LN040	S3316LN040	0.71	5.38	-	1	2.0

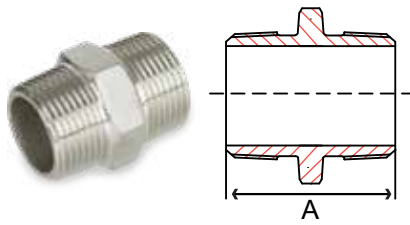


HVY PATTERN 150#

*Dimensions are minimums

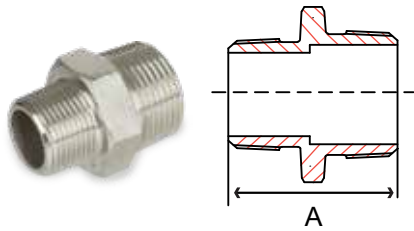


Fig. S8346HN - 316 Hex Nipple



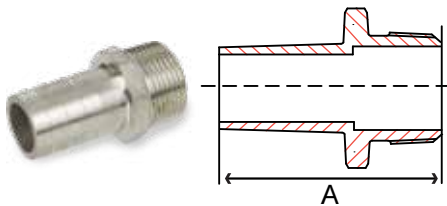
Diameter in	Part Number 316	A in	Packing		Weight lb
			Inner	Master	
1/8	S8346HN001	1.30	50	200	0.02
1/4	S8346HN002	1.30	50	200	0.04
3/8	S8346HN003	1.38	50	200	0.08
1/2	S8346HN004	1.67	50	200	0.1
3/4	S8346HN006	1.81	25	100	0.1
1	S8346HN010	1.97	25	100	0.3
1 1/4	S8346HN012	2.28	-	50	0.4
1 1/2	S8346HN014	2.36	-	50	0.6
2	S8346HN020	2.70	-	20	0.9

Fig. S8346RH - 316 Reducing Hex Nipple



Diameter in	Part Number 316	A in	Packing		Weight lb
			Inner	Master	
1/4 x 1/8	S8346RH002001	1.30	50	200	0.04
3/8 x 1/4	S8346RH003002	1.38	50	200	0.08
1/2 x 3/8	S8346RH004003	1.67	50	200	0.1
3/4 x 1/2	S8346RH006004	1.81	25	100	0.1
1 x 3/4	S8346RH010006	1.97	25	100	0.3
1-1/4 x 1	S8346RH012010	2.28	-	50	0.4
1-1/2 x 1-1/4	S8346RH014012	2.36	-	50	0.6
2 x 1-1/2	S8346RH020014	2.70	-	20	0.9

Fig. S8346KN - 316 King Nipple Hose x Threaded



Diameter in	Part Number 316	A in	Packing		Weight lb
			Inner	Master	
1/8	S8346KN001	1.57	25	100	0.02
1/4	S8346KN002	1.77	25	100	0.05
3/8	S8346KN003	1.97	25	100	0.07
1/2	S8346KN004	2.36	25	100	0.1
3/4	S8346KN006	2.56	25	100	0.2
1	S8346KN010	2.95	-	50	0.3
1 1/4	S8346KN012	3.35	-	40	0.5
1 1/2	S8346KN014	3.54	-	40	0.9
2	S8346KN020	3.94	-	20	1.3
2-1/2	S8346KN024	4.72	-	12	1.7
3	S8346KN030	5.12	-	5	2.0
4	S8346KN040	5.51	-	5	4.6

**Series 0384
PTFE Tape with Nickel**

- Use on Stainless Steel Threads
- 90% PTFE / 10% Nickel
- Melting Point 620°F (327°C)
- Thickness .0045 (±.0005)
- ISO 9001:2008 Manufacturer
- ASTM Mill Spec T-27730A



Size in	Part Number	Length in	Packing		Weight lb
			Inner	Master	
1/2	0384260G	260	100	600	0.02
3/4	0384260I	260	50	300	0.04

HVY PATTERN 150 #



Fig. S3714E & S3716E - 90° Elbow

Size in	Part Number		A in	Packing		Weight lb
	304	316		Inner	Master	
1/2	S3714E 004	S3716E 004	1.06	20	80	0.3
3/4	S3714E 006	S3716E 006	1.24	15	60	0.5
1	S3714E 010	S3716E 010	1.42	5	20	0.9
1-1/4	S3714E 012	S3716E 012	1.65	5	20	1.3
1-1/2	S3714E 014	S3716E 014	1.89	2	8	1.6
2	S3714E 020	S3716E 020	2.20	2	8	2.2
2-1/2	S3714E 024	S3716E 024	2.68	-	1	4.3
3	S3714E 030	S3716E 030	3.03	-	1	6.3

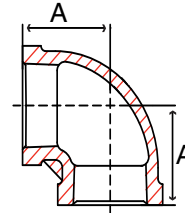


Fig. S3714F & S3716F - 45° Elbow

Size in	Part Number		A in	Packing		Weight lb
	304	316		Inner	Master	
1/2	S3714F 004	S3716F 004	0.87	30	120	0.2
3/4	S3714F 006	S3716F 006	1.00	20	80	0.4
1	S3714F 010	S3716F 010	1.12	10	40	0.6
1-1/4	S3714F 012	S3716F 012	1.31	5	20	1.0
1-1/2	S3714F 014	S3716F 014	1.43	4	16	1.5
2	S3714F 020	S3716F 020	1.68	2	8	2.0

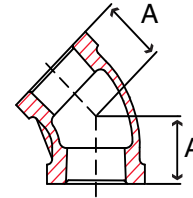


Fig. S3714T & S3716T - Tee

Size in	Part Number		A in	Packing		Weight lb
	304	316		Inner	Master	
1/2	S3714T 004	S3716T 004	1.06	20	80	0.4
3/4	S3714T 006	S3716T 006	1.24	10	40	0.7
1	S3714T 010	S3716T 010	1.42	5	20	1.1
1-1/4	S3714T 012	S3716T 012	1.65	2	8	1.9
1-1/2	S3714T 014	S3716T 014	1.89	2	8	2.1
2	S3714T 020	S3716T 020	2.20	-	1	3.3
2-1/2	S3714T 024	S3716T 024	2.68	-	1	5.9
3	S3714T 030	S3716T 030	3.03	-	1	9.3

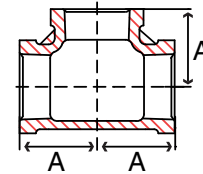


Fig. S3714U & S3716U - Union

Size in	Part Number		A in	B in	Packing		Weight lb
	304	316			Inner	Master	
1/2	S3714U 004	S3716U 004	1.46	1.46	20	80	0.4
3/4	S3714U 006	S3716U 006	1.56	1.81	10	40	0.5
1	S3714U 010	S3716U 010	1.85	2.05	5	20	0.9
1-1/4	S3714U 012	S3716U 012	2.05	2.52	2	8	1.3
1-1/2	S3714U 014	S3716U 014	2.19	2.76	2	8	2.0
2	S3714U 020	S3716U 020	2.50	3.39	2	8	3.0

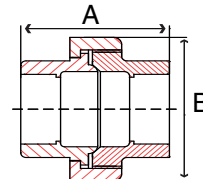


Fig. 3714RC & 3716RC - Reducing Coupling

Size in	Part Number		A in	Packing		Weight lb
	304	316		Inner	Master	
3/4 x 1/2	S3714RC006004	S3716RC006004	1.42	15	60	0.3
1 x 1/2	S3714RC010004	S3716RC010004	1.54	15	60	0.6
1 x 3/4	S3714RC010006	S3716RC010006	1.57	15	60	0.6
1-1/4 x 1	S3714RC012010	S3716RC012010	1.77	10	40	0.7
1-1/2 x 1	S3714RC014010	S3716RC014010	1.85	10	40	0.8
1-1/2 x 1-1/4	S3714RC014012	S3716RC014012	1.93	10	40	0.8
2 x 1	S3714RC020010	S3716RC020010	1.93	2	8	1.6
2 x 1-1/2	S3714RC020014	S3716RC020014	2.01	2	8	1.6

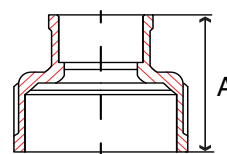
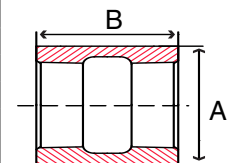


Fig. 3714CP & 3716CP - Full Coupling

Size in	Part Number		A in	B in	Packing		Weight lb
	304	316			Inner	Master	
1/2	S3714CP004	S3716CP004	1.20	1.38	50	200	0.1
3/4	S3714CP006	S3716CP006	1.46	1.50	35	140	0.2
1	S3714CP010	S3716CP010	1.77	1.62	15	60	0.4
1-1/4	S3714CP012	S3716CP012	2.15	2.00	10	40	0.5
1-1/2	S3714CP014	S3716CP014	2.43	2.12	10	40	0.6
2	S3714CP020	S3716CP020	2.96	2.50	2	8	1.3
2-1/2	S3714CP024	S3716CP024	3.31	2.87	-	1	2.3
3	S3714CP030	S3716CP030	4.00	3.18	-	1	3.3



STANDARD 150#